

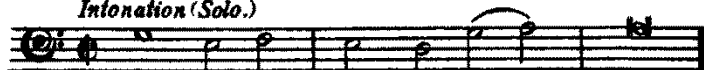
Missa Papae Marcelli



Credo

G. Palestrina

Intonation (Solo.)



Segue subito

Cre - do in u - num De - - um.

Tutti.

Soprano I. *mf* Pa - trem om - ni - - po - ten - - tem, *CRSC.*

Soprano II. *mf* Pa - trem om - ni - - po - ten - - tem, *CRSC.* *f* fac-to-rem

Contralto I. *mf* Pa - trem om - ni - - po - ten - - tem, *CRSC.* *f* fac-to-rem

Contralto II. and Tenor. *f* Fac-to-rem

Bass I. *mf* Pa - trem om - ni - - po - ten - - tem, *CRSC.*

Bass II. *f* Fac-to-rem

www.everynote.com